



## KGK JET CHECKER PK100

**A compact print inspection system with the affordable price.**

<http://www.kgkjetindia.com>

Simple Operation

Compact Design



▲ Controller / Lighting / Camera

■ **Easy to see on a large screen**  
KGK Jet PK100, inspection settings can be displayed on a single 8-inch monitor screen, empowers you just see the device settings at a glance.

■ **Full-scale print inspection with simple operation**  
On the simple setting screen, it is possible to create inspection settings by actual measurement using a bounding box instead of numerical input. In addition, it's now possible to process terms for images with ease. This makes automatic and quick operation possible.

■ **Installation space saver**  
Ergonomically designed standalone device, the holding interface is provided on the bottom and side, so various installation methods possible, such as mounting to a camera stand or conveyor frame. There is no need to install it in the control panel or prepare a separate DC power supply.

■ **In-built storage**  
Up to 10,000 images can be saved. By using it together with a separately generated history file, you can save as many as 1 million images and contributes to the growth of your company's traceability.

IP 65 Protection



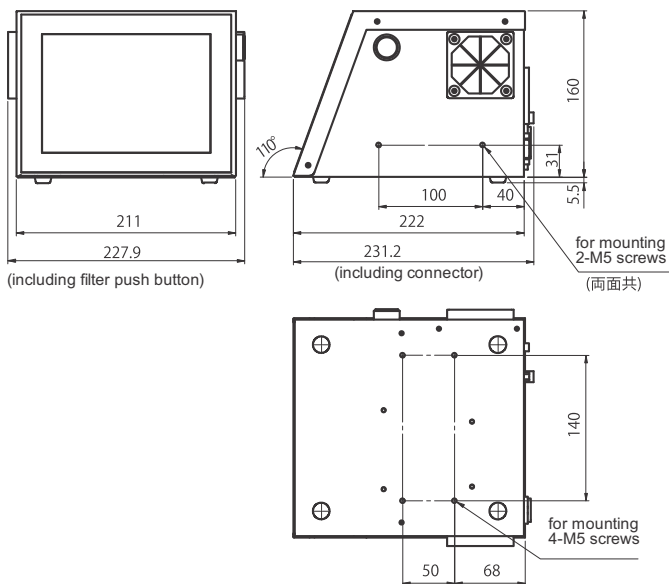
▲ Inspection screen

## ● Specifications

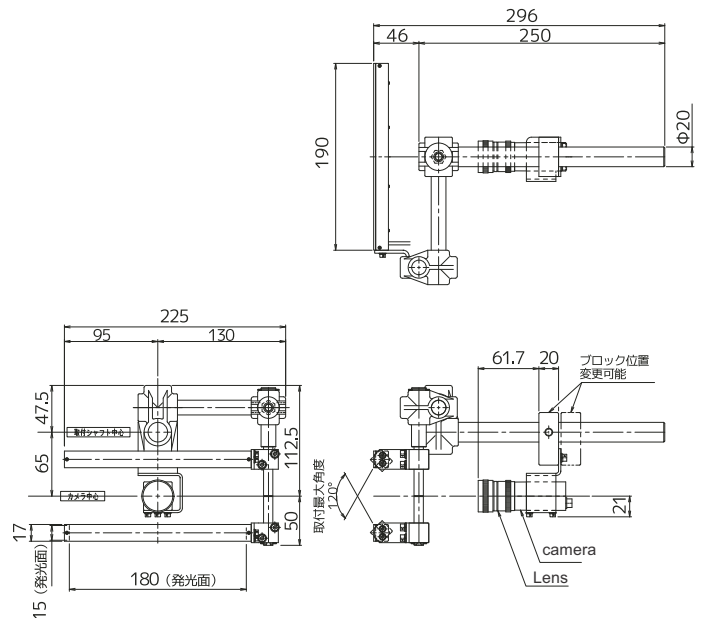
Item	Details
Number of items to store	Up to 20
Number of cameras	1
Characters to inspect	Alphanumerical and 30 other characters to store
What to inspect	Verification, missing prints, print positioning, print inclination, missing print, missing dots and density
Number of character for inspecting	Up to 20 for each zone (Up to two zones made available)
Year/month/date/time inspection	Corresponding to KGK inkjet printer models
Character allocation system	Correspond to KGK inkjet printer models
Number of images to save	Up to 60,000 JPEG images
Input/output signals	Input: up to 16 and switchable to banning inspection, etc. Output: up to 12 including Yes/No, in operation, in processing, no continued operation or alarm, etc..
I/O	USB2.0×2, RS-232C×1
Speed	100mm/second for 10 character in an image depending on other conditions
Power source	AC100-240V±10% 50/60Hz 80W
External dimensions	2279mm(W) × 231.2mm(D) × 165.5mm(H) Requiring some 100mm depth space at back for cable connection
Operational environment	5 to 35 Degree C° to 20 to 80% RH (with no dew condensation)

## ● Dimensions

### Controller



### Camera · Illumination



We reserve a mand design and/ or specification without notic



### KGK Jet India Private Limited

Head Office / Works  
Plot No: A-29, SIPCOT Industrial Growth Center, Oragadam,  
Sriperumbuthur, Kancheepuram, Tamil Nadu 602105, India

✦ marketing@kgkjetindia.com  
✦ info@kgkjetindia.com  
✦ www.kgkjetindia.com

**Region North:** Cabin # 11, Ground Floor, Logix Techno Park, Plot No. 5 Sector 127, Tower-B, Sector 127, Noida, Uttar Pradesh 201301

**Region East:** PS QUBE, Unit No- 604, 6th Floor, Plot Number: II D/31/1, Street No: 1111, New Town, Action Area-II D, Kolkata, West Bengal 700135

**Region South:** Plot No: A-29, SIPCOT Industrial Growth Center, Oragadam, Sriperumbuthur, Kancheepuram, Tamil Nadu 602105

**Region West:** Horizon Flora, Office No. 1 & 2, 2nd Floor, Ghodbunder Rd, Bhayandarpada, Thane West, Mumbai, Maharashtra 400615



+91 78239 71747

+91 98403 42033

Sales



+91 044 6714 1234

+91 78239 70635

Tech Support